

# MONTHLY MEMBERSHIP PROGRESS REPORT

LOCATION INDIA

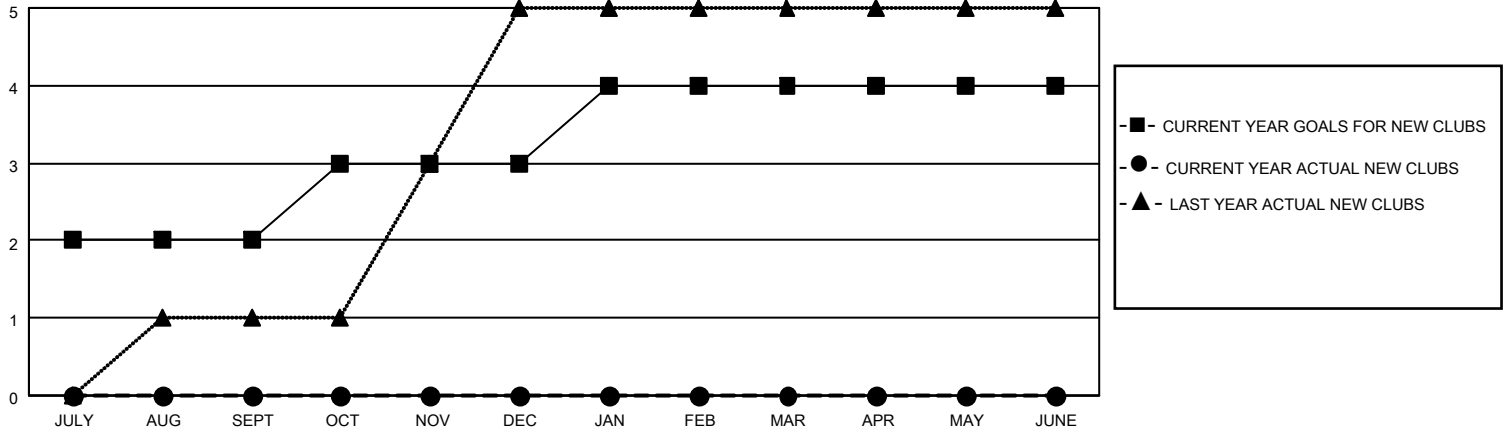
District 322 D

Results as of: 8/31/2021

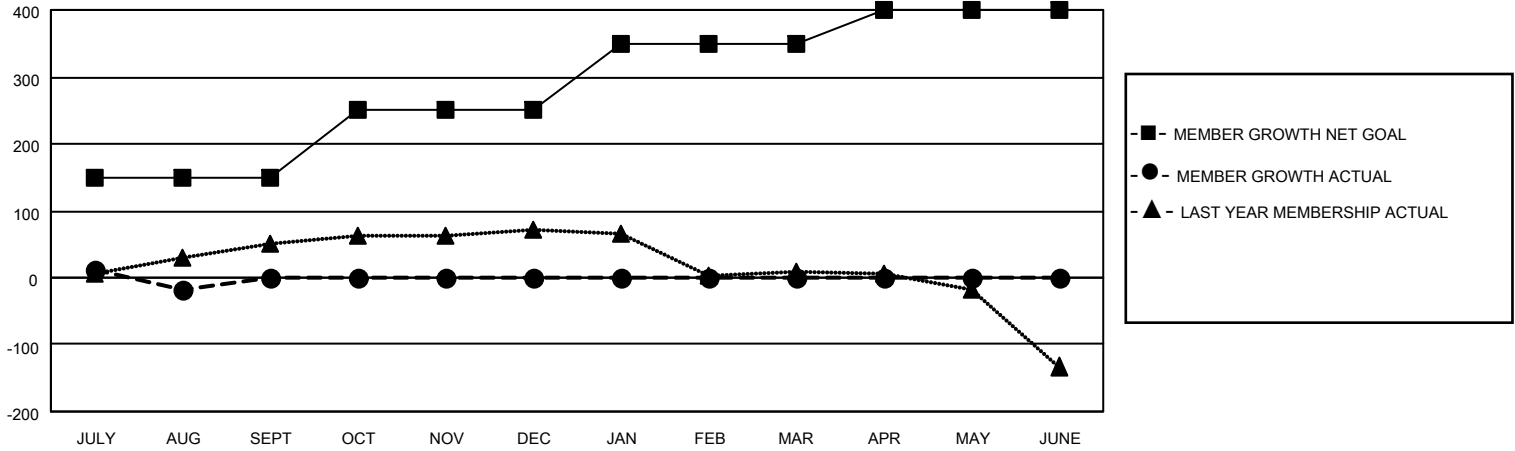
Clubs			
RESULTS FOR 2021-2022			
QUARTER	NEW CLUB GOAL	NEW CLUBS	DROPPED CLUBS
JULY/AUG/SEPT	2	0	3
OCT/NOV/DEC	1	0	0
JAN/FEB/MAR	1	0	0
APR/MAY/JUNE	0	0	0

Members			
RESULTS FOR 2021-2022			
QUARTER	MEMBER GROWTH NET GOAL	MEMBER GROWTH ACTUAL	DROPPED MEMBERS ACTUAL (including transfers)
JULY/AUG/SEPT	150	45	63
OCT/NOV/DEC	100	0	0
JAN/FEB/MAR	100	0	0
APR/MAY/JUNE	50	0	0

**GOALS AND ACTUAL NEW CLUBS CUMULATIVE**



**GOALS AND ACTUAL MEMBERS CUMULATIVE**



**DROPPED CLUBS: 3**

**18 CLUBS OF 79 ADDED 1 OR MORE NEW MEMBERS**

**GENDER DISTRIBUTION**

MALE	2,066 (71.39%)
FEMALE	828 (28.61%)
NON BINARY	0 (0.00%)
PREFER NOT TO ANSWER	0 (0.00%)

**DROPPED MEMBERS**

DECEASED	2
CLUB CANCELLED	44
OTHER	17
<b>TOTAL</b>	<b>63</b>

[CLICK HERE FOR CUMULATIVE MEMBERSHIP DATA](#)

TOTAL FAMILY UNIT MEMBERS	1,171
FAMILY MEMBERS PAYING HALF DUES	653